



► DESCRIPTION

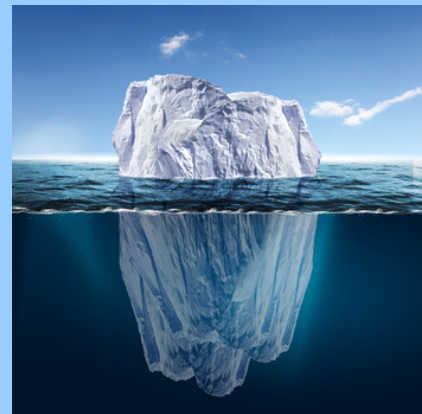
ENNAGRAM's ICEBERG WATER is made from true icebergs collected in the Canadian Arctic, off the northeast coast of Newfoundland. Shielded for thousands of years in the frozen heart of the arctic glaciers, it is considered as the purest water on Earth and thus the purest source of moisture for the skin, of course.

► ORIGIN OF THE ARCTIC ICEBERGS

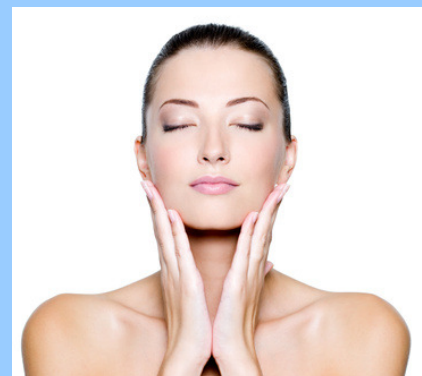
The majority of the icebergs in the North Atlantic come from about 100 iceberg-producing glaciers along the Greenland coast. These glaciers are among the fastest-moving in the world, up to 7 km per year. Glaciers form on land as a result of an accumulation of snow over thousands of years. Successive layers compress earlier accumulations until, at depths below 60 to 70 metres, glacial ice is formed. Glaciers "flow" or "creep" outward under their own weight like a viscous fluid. When the edge of a glacier advances into the ocean, the pieces that break off are what we call icebergs. The icebergs we are collecting off Newfoundland are carried south in the cold Labrador current. These icebergs calved from a glacier more than a year before. They often spend a year or more in cold arctic bays melting slowly (or not at all in winter) until eventually passing through the Davis Strait and into the Labrador current. Rarely do icebergs last more than one year south of this point. The glacial ice that icebergs are made of may be more than 15,000 years old.

► PRODUCTION METHOD

Each year, during spring and early summer, we are harvesting ice on small size icebergs off the northeast coast of Newfoundland, Canada, before these icebergs completely melt. The harvest is made by special boats (see back picture). The collected ice is melted, and the obtained water is filtrated and carefully packed. It is then fully analysed by professional analytical services.



12000 years ago, the Earth's snow was truly pure, Immaculate. Pristine. As the snow fall over the eons, the Arctic presented the perfect environment for this snow to freeze and compact behind enormous glacial walls. Locked deep and safe in these glaciers for thousands of years, protected from all impurities from the outside world, the iceberg water is the purest, most natural water available on our planet. Purely unique for a purely refreshed skin.



► SPECIFICATIONS

Appearance	Limpid liquid
Colour	Colourless
Odour	Odourless
pH	6.0 – 7.5
Minerals	≤ 5.0 ppm
Heavy metals	≤ 0.1 ppm
Preservation	None
Total germs	< 100 cfu/ml
Yeasts and moulds	Absence
Pathogens	Absence



► COMPOSITION

The ICEBERG WATER, coming from ice which is more than 15000 years old and never touched ground, is considered as the purest natural water found on Earth, containing less than 5 ppm of dissolved solids. Its typical composition is as following:

Sodium	≤ 1.20 ppm	Aluminium	≤ 0.15 ppm	Chloride	≤ 1.20 ppm
Calcium	≤ 0.50 ppm	Copper	Absence	Sulphate	≤ 0.90 ppm
Magnesium	≤ 0.13 ppm	Potassium	Absence	Fluoride	≤ 0.30 ppm
Iron	≤ 0.10 ppm	Manganese	Absence	Nitrate	≤ 0.12 ppm

► COSMETIC APPLICATIONS

The ICEBERG WATER is a unique source of moisture and refreshment for all skin types, even the most sensitive.

As a very rare and pure ingredient, it will instantly add a unique touch to your products!

It can be incorporated in:

- Skin care products such as creams, milks, gels, lotions, masks, cleansers, toners...
- Body milks, hand creams
- After-shave balms
- Bath and shower gels
- Hair care products such as shampoos, masks, conditioners...

► TOXICITY

Oral toxicity:	Not toxic
Skin irritation (human patch test):	Not irritant (100 % concentration)
Eye irritation:	Not irritant (100 % concentration)

▶ PRODUCT IDENTIFICATION

<i>INCI Name (EU)</i>	<i>INCI Name (US)</i>	<i>CAS no.</i>	<i>Einecs no.</i>
Aqua	Water	7732-18-5	231 791 2

Customs tariff no. (EU): 2201900000

▶ STORAGE

Keep in the original tightly-closed container, at room temperature (20 °C), away from light, heat and humidity sources. Once opened use the content quickly.